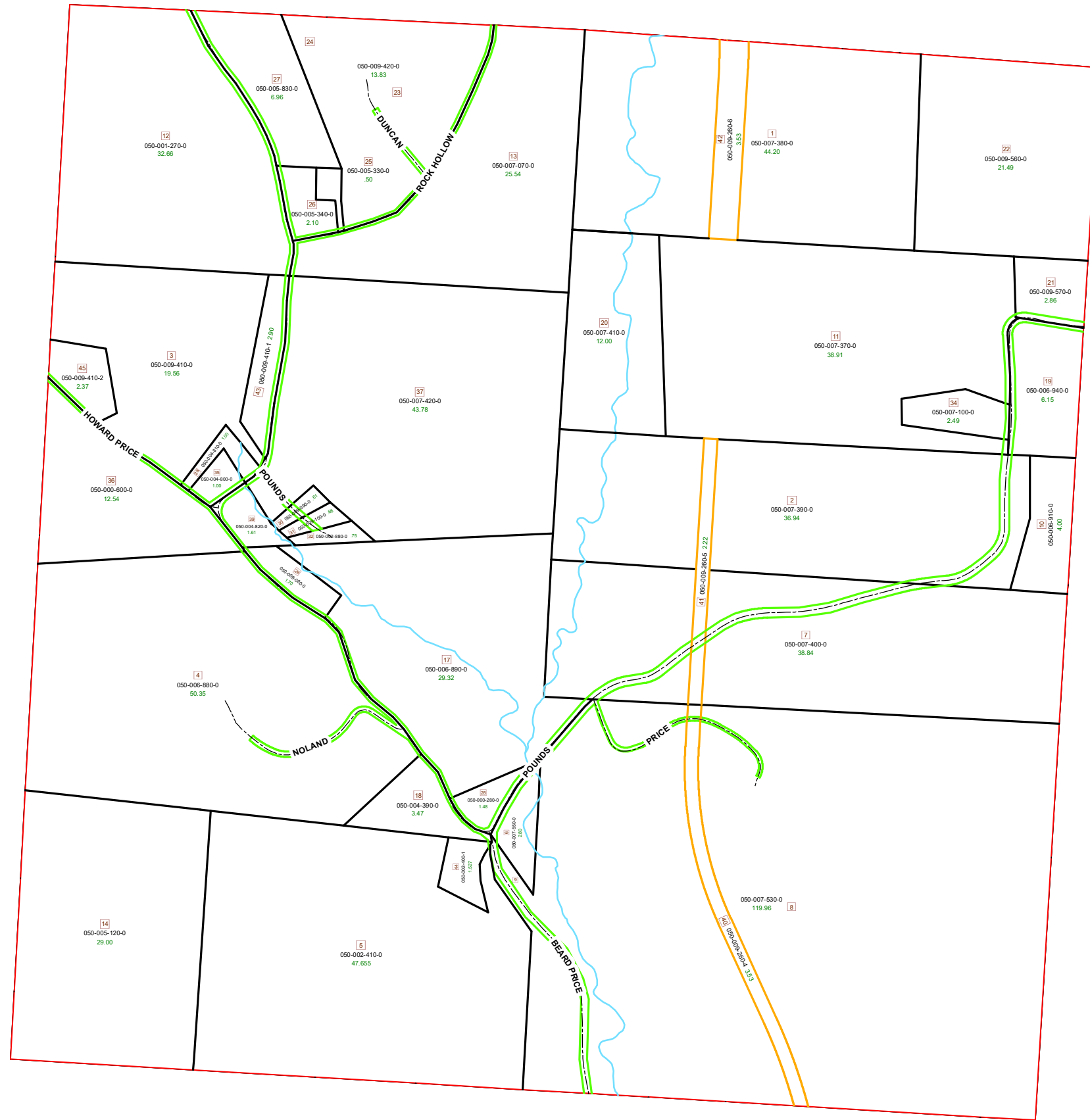
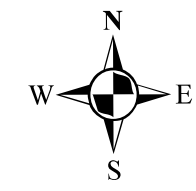


HOMER TOWNSHIP SECTION 11 R13 TWP 7 MORGAN COUNTY, OH

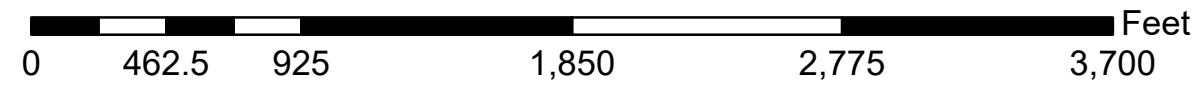


PIN	VOL	PAGE	Owner	LegalDescr	Acres
050-009-080-0	OR136	437	BAKER GREGORY A	R13 T07 S11 SD 29 EX	1.7
050-000-600-0	D.V	18 346	BARCLAY GARY & SUSAN	R13 T07 S11 SD 36 SU	12.541
050-009-410-1	OR177	33	BROWN ELIZABETH J & SETH A MC	R13 T07 S11 SD 43 SU	2.9
050-001-270-0	D.V	18 295	BRUTVAN CHARLES A & ANN K ET	R13 T07 S11 SD 12	32.66
050-009-090-0	OR198	754	CINQUEPALMI MARVIN H JR	R13 T07 S11 SD 30 EX	0.61
050-007-550-0	D.V	20 184	FAULKNER LAWRENCE A & EILEEN	R13 T07 S11 SD 6	2.8
050-007-530-0	D.V	20 184	FAULKNER LAWRENCE A & EILEEN	R13 T07 S11 SD 8-9	119.96
050-009-260-4	OR60	550	FAULKNER LAWRENCE A & EILEEN	R13 T07 S11 SD 40 SU	3.53
050-009-100-0	OR232	4882	FREY DANIEL EUGENE	R13 T07 S11 SD 31 EX	0.68
050-002-880-0	OR127	486	FREY JEFFREY J	R13 T07 S11 SD 32	0.746
050-002-400-1	OR233	3607	GOHRING TYLER W	R13 T07 S11 SD 44 SU	1.527
050-007-070-0	OR73	723	HARVEY ANTHONY P & SHERIDA	R13 T07 S11 SD 13 SU	25.54
050-009-570-0	OR226	2259	HEART FIELDS LLC	R13 T07 S11 SD 21	2.855
050-009-560-0	OR226	2259	HEART FIELDS LLC	R13 T07 S11 SD 22	21.488
050-002-410-0	OR232	4701	HIXSON JASON MICHAEL II	R13 T07 S11 SD 05	47.655
050-004-390-0	OR223	2464	KIRKBRIDE CASEY L & AMY E	R13 T07 S11 SD 18 SU	3.471
050-004-800-0	OR207	2834	KNOX CLYDE JR TOD-JULIE ANN GO	R13 T07 S11 SD 35 EX	1
050-004-810-0	OR207	2830	KNOX DOUGLAS C & PATRICIA R H	R13 T07 S11 SD 38 SU	1
050-009-410-0	OR207	2830	KNOX DOUGLAS C & PATRICIA R H	R13 T07 S11 SD 3 SUR	19.561
050-005-120-0	OR178	665	LEEPER ROBERT F & THOMAS E TRU	R13 T07 S11 SD 14	29
050-005-830-0	OR24	162	OFFET TANN	R13 T07 S11 SD 27	6.96
050-009-260-5	OR229	787	PARSONS TREE FARM LP	R13 T07 S11 SD 41	2.22
050-007-400-0	OR229	787	PARSONS TREE FARM LP	R13 T07 S11 SD 7	38.84
050-006-890-0	OR229	787	PARSONS TREE FARM LP	R13 T07 S11 SD 17	29.32
050-007-390-0	OR213	181	PARSONS TREE FARM LP	R13 T07 S11 SD 2	36.94
050-007-420-0	OR229	787	PARSONS TREE FARM LP	R13 T07 S11 SD 37	43.78
050-007-370-0	OR229	787	PARSONS TREE FARM LP	R13 T07 S11 SD 11	38.914
050-007-410-0	OR229	787	PARSONS TREE FARM LP	R13 T07 S11 SD 20	12
050-007-380-0	OR229	787	PARSONS TREE FARM LP	R13 T07 S11 SD 1	44.2
050-009-260-6	OR229	787	PARSONS TREE FARM LP	R13 T07 S11 SD 42	3.53
050-009-410-2	OR206	2712	PRICE MELANIE & JERRY HORSLEY	R13 T07 S11 SD 45 SU	2.37
050-006-910-0	OR20	660	RICHARDS CHARLES	R13 T07 S11 SD 10	4
050-006-940-0	OR20	660	RICHARDS CHARLES	R13 T07 S11 SD 19	6.15
050-004-820-0	OR117	66	ROBSON MARK J	R13 T07 S11 SD 39	1.608
050-005-330-0	OR221	2715	ROCK HOLLOW RETREAT LLC	R13 T07 S11 SD 25	0.605
050-005-340-0	OR221	2715	ROCK HOLLOW RETREAT LLC	R13 T07 S11 SD 26	1.93
050-000-280-0	OR192	145	SMITH TERRI L	R13 T07 S11 SD 28	1.483
050-009-420-0	D.V	14 551	THOMPSON DOUGLAS A & SUSAN J	R13 T07 S11 SD 23-24	13.83
050-006-880-0	OR95	178	WIGGINS DAVID A & JANETTA J	R13 T07 S11 SD 4 SUR	50.353
050-007-100-0	OR98	750	WOLCOSKI EDWARD & VICKI LYNNER	R13 T07 S11 SD 34 EX	2.486



Boundaries

- Hidden
- Section
- Township
- Parcels
- Roads
- Lot
- Parcel
- County
- ROW
- Hydro



Disclaimer: The information that these maps contains is for reference purposes only. Please bring any errors to the attention of the Engineer's Office staff.
Thank you